

# ALARA PRICE LIST

## FOR SERVICES PROVIDED UNDER THE NATIONAL DISABILITY INSURANCE SCHEME

effective 1 July 2021



\*Participants and their nominees are encouraged to compare this price list and NDIS Support Catalogue 2021 - 2022  
valid from 1 July 2021

**ALARA QLD Limited.**

**8 Warwick Road  
Ipswich QLD 4305**

**Phone: 617 3817 0600**

**Fax: 617 3812 0450**

**Email: [alara@alaraqld.org.au](mailto:alara@alaraqld.org.au)**

**Website: [www.alaraqld.org.au](http://www.alaraqld.org.au)**

**Facebook:**

**[www.facebook.com.au/ALARAAssociationInc](http://www.facebook.com.au/ALARAAssociationInc)**

## TABLE OF CONTENTS

CORE SUPPORTS .....	6
Establishment fee for personal care / community access.....	7
Assistance with self-care activities .....	8
ALARA's prices for self-care activities (standard needs) .....	9
One hour supports (TTP Pricing) (standard needs) .....	9
ALARA's prices for self-care activities (complex needs – level 1).....	10
One hour supports (TTP Pricing) (complex needs – level 1).....	10
ALARA's prices for self-care activities (complex needs – level 2).....	11
One hour supports (TTP Pricing) (complex needs – level 2).....	11
ALARA's prices for self-care activities (complex needs – level 3).....	12
One hour supports (TTP Pricing) (complex needs – level 3).....	12
ALARA's prices for assistance with daily life.....	13
Overnight Support .....	14
ALARA's prices for assistance with on-call overnight monitoring.....	14
Night-Time Sleepover Support .....	14
ALARA's prices for assistance with night-time sleepover support.....	14
Individual and group based community – social, economic and community activities.....	15
ALARA's prices for social, economic and community activities (individual - standard needs) .....	16
ALARA's prices for social, economic and community activities .....	16
ALARA's prices for social, economic and community activities (individual - complex needs – level 1)... ..	17
ALARA's prices for social, economic and community activities .....	17
ALARA's prices for social, economic and community activities (individual - complex needs – level 2)... ..	18
ALARA's prices for social, economic and community activities .....	18
ALARA's prices for social, economic and communities activities (individual - complex needs – level 3) .....	19
ALARA's prices for social, economic and community activities .....	19
ALARA's prices for group based community, social and recreational activities .....	20
Ratio 1 staff – 2 participants (standard needs) .....	20
ALARA's prices for group based community, social and recreational activities .....	20
Ratio 1 staff – 2 participants (complex needs) .....	20
ALARA's prices for group based community, social and recreational activities .....	21
Ratio 1 staff – 3 participants (standard needs) .....	21
ALARA's prices for group based community, social and recreational activities .....	21
Ratio 1 staff – 3 participants (complex needs – high intensity support).....	21
ALARA's prices for group based community, social and recreational activities .....	22
Ratio 1 staff – 4 participants (standard needs only) .....	22
Ratio 1 staff – 5 participants (standard needs only) .....	22

Community Hubs (Centre based support).....	23
Community, Social and Recreational Activities (by Quote).....	23
ALARA's prices for centre-based group activities.....	24
Centre based 1 staff to 1 participant support (standard needs).....	24
Centre based 1 staff to 1 participant support (complex needs – high intensity support) .....	24
Centre based 1 staff to 2 participants support (standard needs) .....	25
Centre based 1 staff to 2 participants support (complex needs – high intensity support).....	25
Centre based 1 staff to 3 participants support – (standard needs only) .....	26
Supported Independent Living .....	27
Short Term Accommodation .....	27
ALARA'S maximum prices for short term accommodation (per 24 hour day) .....	28
Ratio 1 staff – 4 participants – standard needs.....	28
Ratio 1 staff – 3 participants – standard needs.....	28
Ratio 1 staff – 2 participants – standard needs.....	28
Ratio 1 staff – 1 participant .....	29
Additional support provided at the same time as Short Term Accommodation e.g. where the person requires a second support worker to assist with the safe transfer.....	29
Core - Transport (General) .....	30
Core – Activity Based Transport .....	30
CAPITAL SUPPORTS.....	31
CAPACITY BUILDING SUPPORTS .....	32
Coordination of Supports .....	33
Improved Life Choices – Plan Management.....	34
Increased Social and Community Participation.....	35
Improved Health and Wellbeing.....	36
Improved Daily Living Skills .....	37
Capacity Building – Activity Related Transport .....	38
OTHER IMPORTANT INFORMATION .....	39
Support Worker Travel Time .....	39
Explaining GST .....	39
Exit Fees.....	39
Cancellations and 'No Shows' .....	39
Non Face to Face Supports.....	39

The National Disability Insurance Scheme (NDIS) provides funding to participants to purchase a range of supports aimed at increasing their independence, inclusion and social and economic participation. This funding model is designed to be flexible and to allow service innovation.

ALARA's PRICE LIST FOR SERVICES is reviewed periodically in line with current NDIS Price Guide. Participants and their nominees are encouraged to compare ALARA PRICES with the most recent NDIS Price Guide.

The NDIS funds supports for participants under three Support Purpose Categories:

**CORE**

**CAPITAL**

**CAPACITY BUILDING**

This price list describes the services delivered by ALARA to participants of the National Disability Insurance Scheme and the prices for different types of service.

# CORE SUPPORTS

Core support budgets can include up to four support categories and funding can generally be used flexibly across all the listed categories. There are some exceptions around transport.

These categories are:

- Assistance with Daily Life
- Assistance with Social, Community and Civic Participation
- Consumables
- Transport in some circumstances

The types of core support that ALARA provides that fit into these categories are:

- Assistance with self-care activities and daily life
- Assistance to access the community and social and recreational activities
- A variety of group based community, social and recreational activities
- Support through our Community Hubs (Centre-based Support)
- Supported Independent Living (Shared Living Arrangements)
- Innovative Short Term Accommodation
- General Transport
- Activity Based Transport

Additionally, access to additional Support Coordination is temporarily available through Core to support participants.

An establishment fee may apply to new participants or continuing participants who support arrangements are significantly different from those previously supplied under State or private funding.

## Establishment fee for personal care / community access

An establishment fee may apply to all participants who are new to ALARA and purchasing 20 hours of personal care / community access support per month or more. This will be negotiated on commencement.

Establishment fees are generally waived for existing clients continuing on with ALARA after their transition to an NDIS Plan other than in instances where the services to be supplied are substantially different or more extensive. In this case an establishment fee will be negotiated.

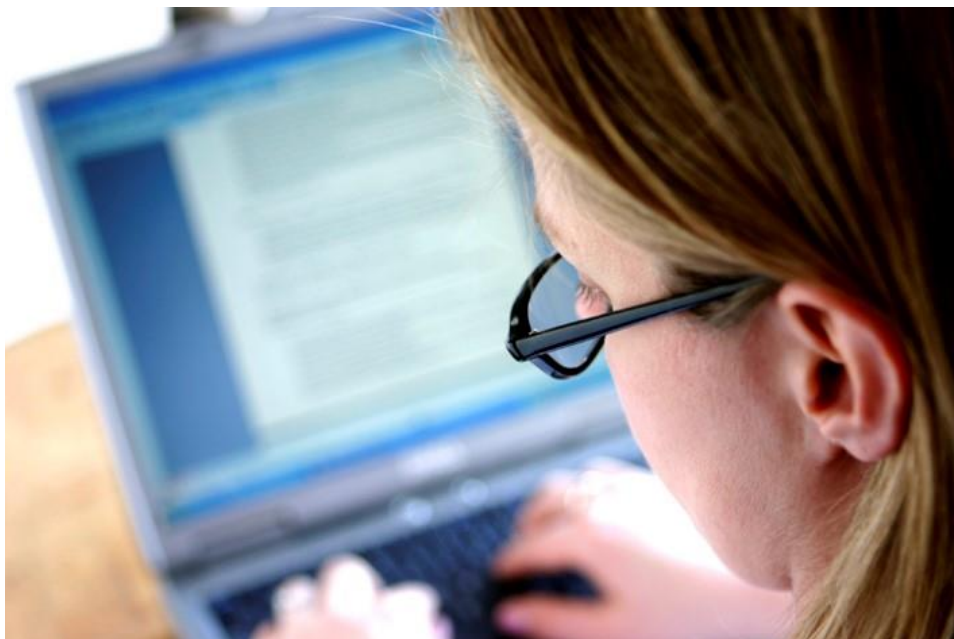
Establishment fees are charged against the individual's NDIS Plan.

Establishment Fees for ALARA services supplied under the NDIS are as follows:

- New participant (new to ALARA and to the NDIS) – up to \$500
- Current NDIS participants changing to ALARA – up to \$250

The establishment fee will be clearly outlined in the quote provided which forms part of your Service Agreement with ALARA.

Consistent with NDIS principles ALARA does not charge exit fees.



ALARA provides a range of services designed to assist you with tasks of daily life. We work with you to develop or maintain your skills and maximise your independence and autonomy at home.

This service can be provided on a regularly rostered or drop-in basis. Your staff can assist with meal preparation, household tasks, personal hygiene and care, shopping, attending appointments and household management. Different rates apply for day, evening, weekends and public holidays.

We also provide essential general housekeeping and garden maintenance services during weekdays. (The NDIA Price Guide refers to this latter support as Assistance with Daily Life).

ALARA will assist you to select a team of support workers who you feel comfortable and confident with and will ensure on-going appropriate training and support.

An after-hours on call service is provided on weekends and public holidays to ensure your service runs smoothly and there is a point of contact in the case your needs change.



ALARA prices are structured according to the level of support required (standard needs / high intensity needs)



## ALARA's prices for self-care activities (standard needs)

NDIS Support Item Description	Price
Daytime weekday	\$57.10 / hour
Weekday evening (after 8pm to 12pm)*	\$62.85 / hour
Weekday night (after 12pm to 6am)**	\$64.00 / hour
Saturday	\$80.10 / hour
Sunday	\$103.11 / hour
Public Holiday (minimum 2 hours)	\$126.11 / hour

NDIS Support Item Ref No.
OFFICE USE ONLY
01_011_0107_1_1
01_015_0107_1_1
01_002_0107_1_1
01_013_0107_1_1
01_014_0107_1_1
01_012_0107_1_1

\* In accordance with award provisions the entire afternoon / evening support will be costed at this rate if the support extends beyond 8pm

\*\* In accordance with award provisions the entire afternoon / evening support will be costed at this rate if the support extends beyond 12pm

## One hour supports (TTP Pricing) (standard needs)

NDIS Support Item Description	Price
1 hr support – Daytime weekday	\$59.67 / hour
1 hr support – Weekday evening (after 8pm to 12pm)*	\$65.68 / hour
1 hr support – Weekday night (after 12pm to 6am)**	\$66.88/ hour
1 hr support – Saturday	\$83.70 / hour
1 hr support – Sunday	\$107.75 / hour

NDIS Support Item Ref No.
OFFICE USE ONLY
01_011_0107_1_1_T
01_015_0107_1_1_T
01_002_0107_1_1_T
01_013_0107_1_1_T
01_012_0107_1_1_T

\* In accordance with award provisions the entire afternoon / evening support will be costed at this rate if the support extends beyond 8pm

\*\* In accordance with award provisions the entire afternoon / evening support will be costed at this rate if the support extends beyond 12pm

## ALARA's prices for self-care activities (complex needs – level 1)

NDIS Support Item Description	Price
Daytime weekday	\$57.10 / hour
Weekday evening (after 8pm to 12pm)*	\$62.85 / hour
Weekday night (after 12pm to 6am)**	\$64.00 / hour
Saturday	\$80.10 / hour
Sunday	\$103.11 / hour
Public Holiday (minimum 2 hours)	\$126.11 / hour

NDIS Support Item Ref No.
OFFICE USE ONLY
01_300_0104_1_1
01_301_0104_1_1
01_305_0104_1_1
01_302_0104_1_1
01_303_0104_1_1
01_304_0104_1_1

\* In accordance with award provisions the entire afternoon / evening support will be costed at this rate if the support extends beyond 8pm

\*\* In accordance with award provisions the entire afternoon / evening support will be costed at this rate if the support extends beyond 12pm

## One hour supports (TTP Pricing) (complex needs – level 1)

NDIS Support Item Description	Price
1 hr support – normal	\$59.67 / hour
1 hr support – Weekday evening (after 8pm to 12pm)*	\$65.68 / hour
1 hr support – Weekday night (after 12pm to 6am)**	\$66.88 / hour
1 hr support – Saturday	\$83.70 / hour
1 hr support – Sunday	\$107.75 / hour

NDIS Support Item Ref No.
OFFICE USE ONLY
01_300_0104_1_1_T
01_301_0104_1_1_T
01_305_0104_1_1_T
01_302_0104_1_1_T
01_303_0104_1_1_T

\* In accordance with award provisions the entire afternoon / evening support will be costed at this rate if the support extends beyond 8pm

\*\* In accordance with award provisions the entire afternoon / evening support will be costed at this rate if the support extends beyond 12pm

## ALARA's prices for self-care activities (complex needs – level 2)

NDIS Support Item Description	Price
Daytime weekday	\$61.79 / hour
Weekday evening (after 8pm to 12pm)*	\$68.01 / hour
Weekday night (after 12pm to 6am)**	\$69.26 / hour
Saturday	\$86.68 / hour
Sunday	\$111.58 / hour
Public Holiday (minimum 2 hours)	\$136.48 / hour

NDIS Support Item Ref No.
OFFICE USE ONLY
01_400_0104_1_1
01_401_0104_1_1
01_405_0104_1_1
01_402_0104_1_1
01_403_0104_1_1
01_404_0104_1_1

\* In accordance with award provisions the entire afternoon / evening support will be costed at this rate if the support extends beyond 8pm

\*\* In accordance with award provisions the entire afternoon / evening support will be costed at this rate if the support extends beyond 12pm

## One hour supports (TTP Pricing) (complex needs – level 2)

NDIS Support Item Description	Price
1 hr support – normal	\$64.36 / hour
1 hr support – Weekday evening (after 8pm to 12pm)*	\$70.84 / hour
1 hr support – Weekday night (after 12pm to 6am)**	\$72.14 / hour
1 hr support – Saturday	\$90.28 / hour
1 hr support – Sunday	\$116.22 / hour

NDIS Support Item Ref No.
OFFICE USE ONLY
01_400_0104_1_1_T
01_401_0104_1_1_T
01_405_0104_1_1_T
01_402_0104_1_1_T
01_403_0104_1_1_T

\* In accordance with award provisions the entire afternoon / evening support will be costed at this rate if the support extends beyond 8pm

\*\* In accordance with award provisions the entire afternoon / evening support will be costed at this rate if the support extends beyond 12pm

### ALARA's prices for self-care activities (complex needs – level 3)

NDIS Support Item Description	Price
Daytime weekday	\$65.09/ hour
Weekday evening (after 8pm to 12pm)*	\$71.64 / hour
Weekday night (after 12pm to 6am)**	\$72.96 / hour
Saturday	\$91.31 / hour
Sunday	\$117.54 / hour
Public Holiday (minimum 2 hours)	\$143.76 / hour

NDIS Support Item Ref No.
OFFICE USE ONLY
01_500_0104_1_1
01_501_0104_1_1
01_505_0104_1_1
01_502_0104_1_1
01_503_0104_1_1
01_504_0104_1_1

\* In accordance with award provisions the entire afternoon / evening support will be costed at this rate if the support extends beyond 8pm

\*\* In accordance with award provisions the entire afternoon / evening support will be costed at this rate if the support extends beyond 12pm

### One hour supports (TTP Pricing) (complex needs – level 3)

NDIS Support Item Description	Price
1 hr support – normal	\$67.66 / hour
1 hr support – Weekday evening (8pm to 12pm)*	\$74.47 / hour
1 hr support – Weekday night (12pm to 6am)**	\$75.84 / hour
1 hr support – Saturday	\$94.91 / hour
1 hr support – Sunday	\$122.18 / hour

NDIS Support Item Ref No.
OFFICE USE ONLY
01_500_0104_1_1_T
01_501_0104_1_1_T
01_505_0104_1_1_T
01_502_0104_1_1_T
01_503_0104_1_1_T

\* In accordance with award provisions the entire afternoon / evening support will be costed at this rate if the support extends beyond 8pm

\*\* In accordance with award provisions the entire afternoon / evening support will be costed at this rate if the support extends beyond 12pm

## ALARA's prices for assistance with daily life

NDIS Support Item Description	Price
<b>Specialised home based assistance for a child</b> Specialist assistance in the home required due to additional requirements of the child's disability (available week days only)	\$51.09 / hour
<b>Yard maintenance</b> Mowing, edging, weeding, trimming low shrubs where the participant is unable to perform these duties (available week days only)	\$49.30 / hour
<b>House cleaning and other household activities (Domestic Assistance)</b> Assisting with general household cleaning that the participant is unable to undertake (available week days only)	\$50.20 / hour
<b>Assistance with Personal Domestic Activities</b> Assistance to undertake and / or develop skills in maintaining the home environment where the participant has sole or substantial responsibility for maintenance. This includes basic house and yard work.	\$51.09 / hour
<b>Self-Managed Capacity Building</b> Assistance to participate with flexibility to purchase services to strengthen their abilities and assistance to self-manage funds.	\$65.09 / hour

Support Item Ref No.
OFFICE USE ONLY
01_016_0104_1_1
01_019_0120_1_1
01_020_0120_1_1
01_004_0107_1_1
01_134_0117_8_1

## Overnight Support

### On-Call Overnight Monitoring

This support item provides for overnight on-call assistance (either onsite or off-site) with, or supervision of, personal tasks of daily living. It applies to any day of the week and on public holidays. This support item is for an eight-hour period and includes up to one hour of active support provided to the participant for the duration of the period.

This support item is subject to quotation. It can only be used if it is a stated item in a plan.

#### ALARA's prices for assistance with on-call overnight monitoring

NDIS Support Item Description	Price
On-call overnight monitoring – off site or onsite (includes 1 hour of assistance)	By quote

#### Support Item Ref No.

OFFICE USE ONLY

01\_017\_0107\_1\_1

### Night-Time Sleepover Support

This support item provides a participant with, or supervision of personal tasks of daily life where overnight support is needed but the support worker can sleep when not required to provide support.

This support applies to any day of the week and public holidays and includes up to two hours of active supports provided during the period. A third or additional hour may be claimed at the applicable rate for Saturday's, Sundays or Public Holidays.

#### ALARA's prices for assistance with night-time sleepover support

NDIS Support Item Description	Price
Assistance with self-care – night-time sleepover	\$242.53

#### Support Item Ref No.

OFFICE USE ONLY

01\_010\_0107\_1\_1

Need support to learn new skills, engage with your community or expand your network of friends?

ALARA will work with you to identify your strengths, interests and aspirations and to create a tailored service to suit your needs and individual funding arrangements. Support can be provided individually or ALARA can investigate shared support arrangements.

ALARA can support you to:

- **Get organised** through assistance to do your shopping, pay the bills and attend appointments.
- **Build on an interest** by taking that passion and linking you to interest groups, courses or one of our in-house programs.
- **Try new things** that your community has to offer.
- **Volunteer** – ALARA works closely with other community groups in the Ipswich, Lockyer and Somerset areas to create new opportunities for people with a disability to be involved in the life of their community and make their own unique contribution.
- **Get healthy and active** – learn to grow and cook healthy food in one of our accessibly kitchen gardens, work out at the local gym or with a personal trainer, participate as a member of a sporting team, joining a walking group or using the local hydrotherapy pool.
- **Get social** – ALARA runs a range of regular and one-off activities to create opportunities for people to develop and foster friendships and enable access to interesting community activities and events.
- **Play sport** – with a local sports team, ALARA Jets Touch Football team, ALARA Darts team or offer ALARA sporting initiatives.
- **Get creative** – ALARA offers a range of Arts Programs to support practising artists and budding artists with a disability to express their creativity, develop new techniques and explore new mediums. A number of programs are offered each year at the *Dingley Dell Gallery* and through the Salisbury Road Art Studio as well as travelling arts opportunities in the Lockyer and Somerset regions.

Individual and group based community, social and recreational activities are run for adults, young adults, teens and children.



ALARA's prices for social, economic and community activities  
(individual - standard needs)

NDIS Support Item Description	Price
Individual – weekday – 1:1 support	\$57.10 / hour
Individual – weekday evening (8 – 12pm)* – 1:1 support	\$62.85 / hour
Individual – Saturday – 1:1 support	\$80.10 / hour
Individual – Sunday – 1:1 support	\$103.11 / hour
Individual –public holiday – 1:1 support (minimum 2 hours)	\$126.11 / hour

NDIS Support Item Ref No.
OFFICE USE ONLY
04_104_0125_6_1
04_103_0125_6_1
04_105_0125_6_1
04_106_0125_6_1
04_102_0125_6_1

*\* In accordance with award provisions the entire afternoon / evening support will be costed at this rate if the support extends beyond 8pm*

ALARA's prices for social, economic and community activities  
(individual – standard needs) One hour supports (TTP Pricing)

NDIS Support Item Description	Price
1 hr support – weekday – 1:1 support	\$59.67/ hour
1 hr support – weekday evening (8pm to 12pm)* - 1:1 support	\$65.68 / hour
1 hr support – Saturday – 1:1 support	\$83.70 / hour
1 hr support – Sunday – 1:1 support	\$107.75 / hour

NDIS Support Item Ref No.
OFFICE USE ONLY
04_104_0125_6_1_T
04_103_0125_6_1_T
04_105_0125_6_1_T
04_106_0125_6_1_T

*\* In accordance with award provisions the entire afternoon / evening support will be costed at this rate if the support extends beyond 8pm*



ALARA's prices for social, economic and community activities  
(individual - complex needs – level 1)

NDIS Support Item Description	Price
Individual – weekday – 1:1 support	\$57.10/ hour
Individual – weekday evening (8 – 12pm)* – 1:1 support	\$62.85 / hour
Individual – Saturday – 1:1 support	\$80.10 / hour
Individual – Sunday – 1:1 support	\$103.11 / hour
Individual –public holiday – 1:1 support (minimum 2 hours)	\$126.11 / hour

NDIS Support Item Ref No.
OFFICE USE ONLY
04_300_0104_1_1
04_301_0104_1_1
04_302_0104_1_1
04_303_0104_1_1
04_304_0104_1_1

*\* In accordance with award provisions the entire afternoon / evening support will be costed at this rate if the support extends beyond 8pm*

ALARA's prices for social, economic and community activities  
(individual – complex needs – level 1) One hour supports (TTP Pricing)

NDIS Support Item Description	Price
1 hr support – weekday – 1:1 support	\$59.67 / hour
1 hr support – weekday evening (8pm to 12pm)* - 1:1 support	\$65.68 / hour
1 hr support – Saturday – 1:1 support	\$83.70 / hour
1 hr support – Sunday – 1:1 support	\$107.75 / hour

NDIS Support Item Ref No.
OFFICE USE ONLY
04_300_0104_1_1_T
04_301_0104_1_1_T
04_302_0104_1_1_T
04_303_0104_1_1_T

*\* In accordance with award provisions the entire afternoon / evening support will be costed at this rate if the support extends beyond 8pm*

ALARA's prices for social, economic and community activities  
(individual - complex needs – level 2)

NDIS Support Item Description	Price
Individual – weekday – 1:1 support	\$61.79 / hour
Individual – weekday evening (8 – 12pm)* – 1:1 support	\$68.01 / hour
Individual – Saturday – 1:1 support	\$86.68 / hour
Individual – Sunday – 1:1 support	\$111.58 / hour
Individual –public holiday – 1:1 support (minimum 2 hours)	\$136.48 / hour

NDIS Support Item Ref No.
OFFICE USE ONLY
04_400_0104_1_1
04_401_0104_1_1
04_402_0104_1_1
04_403_0104_1_1
04_404_0104_1_1

*\* In accordance with award provisions the entire afternoon / evening support will be costed at this rate if the support extends beyond 8pm*

ALARA's prices for social, economic and community activities  
(individual – complex needs – level 2) One hour supports (TTP Pricing)

NDIS Support Item Description	Price
1 hr support – weekday – 1:1 support	\$64.36 / hour
1 hr support – weekday evening (8pm to 12pm)* - 1:1 support	\$70.84 / hour
1 hr support – Saturday – 1:1 support	\$90.28 / hour
1 hr support – Sunday – 1:1 support	\$116.22 / hour

NDIS Support Item Ref No.
OFFICE USE ONLY
04_400_0104_1_1_T
04_401_0104_1_1_T
04_402_0104_1_1_T
04_403_0104_1_1_T

*\* In accordance with award provisions the entire afternoon / evening support will be costed at this rate if the support extends beyond 8pm*

ALARA's prices for social, economic and communities activities  
(individual - complex needs – level 3)

NDIS Support Item Description	Price
Individual – weekday – 1:1 support	\$65.09 / hour
Individual – weekday evening (8 – 12pm)* – 1:1 support	\$71.64 / hour
Individual – Saturday – 1:1 support	\$91.31 / hour
Individual – Sunday – 1:1 support	\$117.54 / hour
Individual –public holiday – 1:1 support (minimum 2 hours)	\$143.76 / hour

NDIS Support Item Ref No.
OFFICE USE ONLY
04_500_0104_1_1
04_501_0104_1_1
04_502_0104_1_1
04_503_0104_1_1
04_504_0104_1_1

*\* In accordance with award provisions the entire afternoon / evening support will be costed at this rate if the support extends beyond 8pm*

ALARA's prices for social, economic and community activities  
(individual – complex needs – level 3) One hour supports (TTP Pricing)

NDIS Support Item Description	Price
1 hr support – weekday – 1:1 support	\$67.66 / hour
1 hr support – weekday evening (8pm to 12pm)* - 1:1 support	\$74.47 / hour
1 hr support – Saturday – 1:1 support	\$94.91 / hour
1 hr support – Sunday – 1:1 support	\$122.18 / hour

NDIS Support Item Ref No.
OFFICE USE ONLY
04_500_0104_1_1_T
04_501_0104_1_1_T
04_502_0104_1_1_T
04_503_0104_1_1_T

*\* In accordance with award provisions the entire afternoon / evening support will be costed at this rate if the support extends beyond 8pm*

## ALARA's prices for group based community, social and recreational activities

### Ratio 1 staff – 2 participants (standard needs)

NDIS Support Item Description		Price	NDIS Support Item Ref No.
			OFFICE USE ONLY
Group based community, social and recreational activities – weekday		\$31.98 / hour	04_111_0136_6_1
Group based community, social and recreational activities – weekday evening (8pm – 12pm)*		\$35.20 / hour	04_114_0136_6_1
Group based community, social and recreational activities – Saturday		\$44.86 / hour	04_112_0136_6_1
Group based community, social and recreational activities – Sunday		\$57.74 / hour	04_113_0136_6_1
Group based community, social and recreational activities – public holiday (minimum 2 hours)		\$70.62 / hour	04_128_0136_6_1

*\* In accordance with award provisions the entire afternoon / evening support will be costed at this rate if the support extends beyond 8pm*

## ALARA's prices for group based community, social and recreational activities

### Ratio 1 staff – 2 participants (complex needs)

NDIS Support Item Description		Price	NDIS Support Item Ref No.
			OFFICE USE ONLY
Group based community, social and recreational activities – weekday		\$34.60 / hour	04_116_0104_6_1
Group based community, social and recreational activities – weekday evening (8pm – 12pm)*		\$38.09 / hour	04_119_0104_6_1
Group based community, social and recreational activities – Saturday		\$48.54 / hour	04_117_0104_6_1
Group based community, social and recreational activities – Sunday		\$62.48 / hour	04_118_0104_6_1
Group based community, social and recreational activities – public holiday (minimum 2 hours)		\$76.43 / hour	04_130_0104_6_1

*\* In accordance with award provisions the entire afternoon / evening support will be costed at this rate if the support extends beyond 8pm*

## ALARA's prices for group based community, social and recreational activities

### Ratio 1 staff – 3 participants (standard needs)

NDIS Support Item Description		Price	NDIS Support Item Ref No.
			OFFICE USE ONLY
Group based community, social and recreational activities – weekday - ratio 1:3		\$23.60 / hour	04_120_0136_6_1
Group based community, social and recreational activities – weekday evening (8 – 12pm)* – ratio 1:3		\$25.98 / hour	04_123_0136_6_1
Group based community, social and recreational activities – Saturday – ratio 1:3		\$33.11 / hour	04_121_0136_6_1
Group based community, social and recreational activities – Sunday – ratio 1:3		\$42.62 / hour	04_122_0136_6_1
Group based community, social and recreational activities – public holiday – ratio 1:3		\$52.13 / hour	04_129_0136_6_1

*\* In accordance with award provisions the entire afternoon / evening support will be costed at this rate if the support extends beyond 8pm*

## ALARA's prices for group based community, social and recreational activities

### Ratio 1 staff – 3 participants (complex needs – high intensity support)

NDIS Support Item Description		Price	NDIS Support Item Ref No.
			OFFICE USE ONLY
Group based community, social and recreational activities – weekday - ratio 1:3		\$25.54 / hour	04_124_0104_6_1
Group based community, social and recreational activities – weekday evening (8 – 12pm)* – ratio 1:3		\$28.11 / hour	04_127_0104_6_1
Group based community, social and recreational activities – Saturday – ratio 1:3		\$35.83 / hour	04_125_0104_6_1
Group based community, social and recreational activities – Sunday – ratio 1:3		\$46.12 / hour	04_126_0104_6_1
Group based community, social and recreational activities – public holiday – ratio 1:3		\$56.41 / hour	04_131_0104_6_1

*\* In accordance with award provisions the entire afternoon / evening support will be costed at this rate if the support extends beyond 8pm*

## ALARA's prices for group based community, social and recreational activities

### Ratio 1 staff – 4 participants (standard needs only)

The following group ratios are only used for approved activities generally where there is active participation of volunteers or community. E.g. ALARA Jets, darts, specific volunteering initiatives.

NDIS Support Item Description		Price	NDIS Support Item Ref No.
			OFFICE USE ONLY
Group based community, social and recreational activities – weekday - ratio 1:4		\$19.41/ hour	04_136_0136_6_1
Group based community, social and recreational activities – weekday evening (8 – 12pm)* – ratio 1:4		\$21.37 / hour	04_137_0136_6_1
Group based community, social and recreational activities – Saturday – ratio 1:4		\$27.23 / hour	04_138_0136_6_1
Group based community, social and recreational activities – Sunday – ratio 1:4		\$35.06 / hour	04_139_0136_6_1
Group based community, social and recreational activities – public holiday – ratio 1:4		\$42.88 / hour	04_140_0136_6_1

*\* In accordance with award provisions the entire afternoon / evening support will be costed at this rate if the support extends beyond 8pm*

### Ratio 1 staff – 5 participants (standard needs only)

The following group ratios are only used for approved activities generally where there is active participation of volunteers or community. e.g. ALARA Jets.

NDIS Support Item Description		Price	NDIS Support Item Ref No.
			OFFICE USE ONLY
Group based community, social and recreational activities – weekday - ratio 1:5		\$16.90 / hour	04_141_0136_6_1
Group based community, social and recreational activities – weekday evening (8 – 12pm)* – ratio 1:5		\$18.60 / hour	04_142_0136_6_1
Group based community, social and recreational activities – Saturday – ratio 1:5		\$23.71 / hour	04_143_0136_6_1
Group based community, social and recreational activities – Sunday – ratio 1:5		\$30.52 / hour	04_144_0136_6_1
Group activities in the community – public holiday – ratio 1:5		\$37.33 / hour	04_145_0136_6_1

*\* In accordance with award provisions the entire afternoon / evening support will be costed at this rate if the support extends beyond 8pm*

## Community Hubs (Centre based support)

ALARA has Community Hubs or "Luke's Place Centres" in Ipswich, Esk and Lockyer. Each centre provides access to a diverse range of opportunities designed around the interests and preferences of individuals and the group.

Programs offered are tailored to individual needs and may include general life skills development, computer use for recreation or further education, gardening, craft, visual and performance arts, meal planning and cooking, volunteering for a range of community organisations, physical fitness or outings with a recreation and leisure focus.

Subject to availability transport may be offered to and from the centres from some locations and in Ipswich between centres using wheelchair accessible mini buses. The provision of transport to and from the hub and during the day to activities arranged through the Hub is included in the hourly rate.

- **Luke's Place Ipswich Area**

Services are provided from three locations in the Ipswich area (Warwick Rd, Salisbury Rd and the Dingley Dell Art Gallery) and operate on a sessional basis Monday to Friday between 9.00am and 4.00pm, afternoon / evening sessions are held and there is a Saturday session from 9.00am to 3.00pm.

- **Luke's Place Esk**

This service provides support for adults who live within the Lowood, Fernvale, Esk and Toogoolawah areas. This centre is generally open from 9.00am to 4.00pm every Tuesday, Thursday and Friday.

- **Luke's Place Lockyer**

The Lockyer centre operates from 9.00am to 4.00pm Monday to Friday with a half-day session on Saturdays. Kid Kapers is held one Saturday per month.

There are a large range of options happening at each hub and new opportunities are being created all the time. To request a sample of our ever-changing monthly calendars simply call the ALARA main office.

### Community, Social and Recreational Activities (by Quote)

This support item can be used for camps, vacation and outside school hours care, an ALARA workshop or course services.

NDIS Support Item Description		Price	NDIS Support Item Ref No.
			OFFICE USE ONLY
Community, Social and Recreational Activities	By quote* (claimed by instance)		04_210_0125_6_1

## ALARA's prices for centre-based group activities

The following prices relate to the support to a participant to engage in centre based, social and recreational activities in a group.

These prices include the NDIA 'cost of capital' loading to assist ALARA to run and maintain its centre based facilities.

### Centre based 1 staff to 1 participant support (standard needs)

NDIS Support Item Description		Price	NDIS Support Item Ref No.
			OFFICE USE ONLY
Centre based social and recreational activities – ratio 1:1 – weekday – standard needs		\$59.27 / hour	04_160_0136_6_1
Centre based social and recreational activities – weekday evening (8 – 12pm)* - ratio 1:1 – standard needs		\$65.02 / hour	04_161_0136_6_1
Centre based social and recreational activities – Saturday – ratio 1:1 – standard needs		\$82.27 / hour	04_162_0136_6_1
Centre based social and recreational activities – Sunday – ratio 1:1 – standard needs		\$105.28 / hour	04_163_0136_6_1

*\* In accordance with award provisions the entire afternoon / evening support will be costed at this rate if the support extends beyond 8pm*

### Centre based 1 staff to 1 participant support (complex needs – high intensity support)

NDIS Support Item Description		Price	NDIS Support Item Ref No.
			OFFICE USE ONLY
Centre based social and recreational activities – ratio 1:1 – weekday – standard needs		\$63.96 / hour	04_185_0104_6_1
Centre based social and recreational activities – weekday evening (8 – 12pm)* - ratio 1:1 – standard needs		\$70.18 / hour	04_186_0104_6_1
Centre based social and recreational activities – Saturday – ratio 1:1 – standard needs		\$88.85 / hour	04_187_0104_6_1
Centre based social and recreational activities – Sunday – ratio 1:1 – standard needs		\$113.75 / hour	04_188_0104_6_1

*\* In accordance with award provisions the entire afternoon / evening support will be costed at this rate if the support extends beyond 8pm*



### Centre based 1 staff to 2 participants support (standard needs)

NDIS Support Item Description	Price
Centre based social and recreational activities – ratio 1:2 – weekdays	\$34.15 / hour
Centre based social and recreational activities – weekday evening (8 – 12pm)* - ratio 1:2	\$37.37 / hour
Centre based social and recreational activities – Saturday – ratio 1:2	\$47.03 / hour
Centre based social and recreational activities – Sunday – ratio 1:2	\$59.91 / hour

NDIS Support Item Ref No.
OFFICE USE ONLY
04_165_0136_6_1
04_166_0136_6_1
04_167_0136_6_1
04_168_0136_6_1

*\* In accordance with award provisions the entire afternoon / evening support will be costed at this rate if the support extends beyond 8pm*

### Centre based 1 staff to 2 participants support (complex needs – high intensity support)

NDIS Support Item Description	Price
Centre based social and recreational activities – ratio 1:2 – weekdays	\$36.77 / hour
Centre based social and recreational activities – weekday evening (8 – 12pm)* - ratio 1:2	\$40.26 / hour
Centre based social and recreational activities – Saturday – ratio 1:2	\$50.71 / hour
Centre based social and recreational activities – Sunday – ratio 1:2	\$64.65 / hour

NDIS Support Item Ref No.
OFFICE USE ONLY
04_190_0104_6_1
04_191_0104_6_1
04_192_0104_6_1
04_193_0104_6_1

*\* In accordance with award provisions the entire afternoon / evening support will be costed at this rate if the support extends beyond 8pm*

Centre based 1 staff to 3 participants support – (standard needs only)

NDIS Support Item Description	Price
Centre based social and recreational activities – ratio 1:3 – weekdays – standard needs	\$25.77 / hour
Centre based social and recreational activities – weekday evening (8 – 12pm)* - ratio 1:3 – standard needs	\$28.15 / hour
Centre based social and recreational activities – Saturday – ratio 1:3 – standard needs	\$35.28 / hour
Centre based social and recreational activities – Sunday – ratio 1:3 – standard needs	\$44.79 / hour

NDIS Support Item Ref No.
OFFICE USE ONLY
04_170_0136_6_1
04_171_0136_6_1
04_172_0136_6_1
04_173_0136_6_1

*\* In accordance with award provisions the entire afternoon / evening support will be costed at this rate if the support extends beyond 8pm*

## Supported Independent Living

ALARA can provide a range of flexible support services in shared living arrangements in this accommodation of choice. This might be a private rental, Department of Housing rental or rental through a Specialist Disability Accommodation (SDA) housing provider.

Depending on the support needs of each individual in the arrangements Supported Independent Living could be provided on a drop-in / rostered basis through to 24 hr / 7 day per week support.

As individuals and their needs vary, a quote will be generated for each shared living arrangement.

Participants and their nominees are encouraged to refer to the *NDIS Price Guide and NDIS Support Catalogue 2020 – 2021 – valid from 1 July 2020*.



## Short Term Accommodation

ALARA provides a range of short term accommodation options aimed at sustaining on-going caring arrangements and meeting crisis needs. We utilise community centre / group residence accommodation and generally provide support on a small group basis. Prices are based on a 24 hour day. Where a fee arrangement for the day of entry or exit is significantly less than 24 hours, a price for that day will be negotiated.

## ALARA'S maximum prices for short term accommodation (per 24 hour day)

(Price includes all expenses, in the 24 hours period associated with daily personal activities, accommodation, food and group activities)

### Ratio 1 staff – 4 participants – standard needs

NDIS Support Item Description	Price
Weekday	up to \$581.53 / day
Saturday	up to \$703.49 / day
Sunday	up to \$852.89 / day
Public holidays	up to \$1,002.29 / day

NDIS Support Item Ref No.
OFFICE USE ONLY
01_045_0115_1_1
01_051_0115_1_1
01_052_0115_1_1
01_053_0115_1_1

### Ratio 1 staff – 3 participants – standard needs

NDIS Support Item Description	Price
Weekday	up to \$714.24 / day
Saturday	up to \$876.85 / day
Sunday	up to \$1,076.05 / day
Public holidays	up to \$1,275.25 / day

NDIS Support Item Ref No.
OFFICE USE ONLY
01_062_0115_1_1
01_063_0115_1_1
01_064_0115_1_1
01_065_0115_1_1

### Ratio 1 staff – 2 participants – standard needs

NDIS Support Item Description	Price
Weekday	up to \$979.65 / day
Saturday	up to \$1,223.57 / day
Sunday	up to \$1,522.37 / day
Public holidays	up to \$1,821.17 / day

NDIS Support Item Ref No.
OFFICE USE ONLY
01_054_0115_1_1
01_055_0115_1_1
01_056_0115_1_1
01_057_0115_1_1

## Ratio 1 staff – 1 participant

NDIS Support Item Description	Price
Weekday	up to \$1,775.89 / day
Saturday	up to \$2,263.73 / day
Sunday	up to \$2,861.33 / day
Public holidays	up to \$3,458.93 / day

NDIS Support Item Ref No.
OFFICE USE ONLY
01_058_0115_1_1
01_059_0115_1_1
01_060_0115_1_1
01_061_0115_1_1

Additional support provided at the same time as Short Term Accommodation e.g. where the person requires a second support worker to assist with the safe transfer

NDIS Support Item Description	Price
Weekday	\$57.10 / hour
Weekday Evening (after 8pm to 12pm)*	\$62.85 / hour
Weekday Night (after 12pm to 6am)**	\$64.00 / hour
Saturday	\$80.10 / hour
Sunday	\$103.11 / hour
Public holidays	\$126.11 / hour

NDIS Support Item Ref No.
OFFICE USE ONLY
01_200_0115_1_1
01_201_0115_1_1
01_205_0115_1_1
01_202_0115_1_1
01_203_0115_1_1
01_204_0115_1_1

\* In accordance with award provisions the entire afternoon / evening support will be costed at this rate if the support extends beyond 8pm

\*\* In accordance with award provisions the entire afternoon / evening support will be costed at this rate if the support extends beyond 12pm

## Core - Transport (General)

General transport supports are supports where the participant pays a provider to transport them to an activity that is not in itself a support – or to a support delivered by another provider. This allows the participant to travel to appointments, volunteering, etc. which they are going to attend independently. Where costs are incurred in addition to the workers time when accompanying participants in the community (such as parking fees, road tolls) they will be agreed prior to the support and claimed against the relevant activity based transport line. The cost of vehicle running costs will be charged as follows. To access this support transport must be listed as a line item in the participant's NDIS Plan. The transport claim is based on the normal hourly rate for the support plus cost of use of the vehicle.

NDIS Support Item Description	Price	NDIS Support Item Ref No.
		OFFICE USE ONLY
Transport provided in support worker or ALARA car	\$0.82c / kilometre*	02_051_0108_1_1
Transport provided in ALARA commuter bus	\$1.32 / kilometre*	02_051_0108_1_1

\* Where more than one participant is supported to travel the per kilometre rate is divided between the participants.

## Core – Activity Based Transport

This is transport that is provided in respect to and from or as part of a community participation support (excluding centre based support). This is travel time charged at the hourly rate for the type of support (including the time the worker is transporting the participant/s). Where costs are incurred in addition to the workers time when accompanying participants in the community (such as parking fees, road tolls) they will be agreed prior to the support and claimed against the relevant activity based transport line. The cost of vehicle running costs will be charged as follows.

NDIS Support Item Description	Price	NDIS Support Item Ref No.
		OFFICE USE ONLY
Activity based transport associated with social and community participation using a support worker car of service vehicle.	\$0.82c / kilometre*	04_590_0125_6_1
Activity based transport associated with social and community participation using a commuter bus.	\$1.32 / kilometre*	04_590_0125_6_1
Activity based transport associated with group social and community participation supports using a support worker car or service vehicle.	\$0.82c / kilometre*	04_591_0136_6_1
Activity based transport associated with group social and community participation supports using a commuter bus.	\$1.32 / kilometre*	04_591_0136_6_1

\* Where more than one participant is supported to travel the per kilometre rate is divided between the participants.

Where another type of vehicle is hired e.g. coach for a larger group then the share of costs (will be negotiated with participants).

# CAPITAL SUPPORTS

ALARA is not a registered provider in relation to capital supports  
(assistive technology, home modifications)

# CAPACITY BUILDING SUPPORTS

You may have Capacity Building (CB) funding in your support plan. This will be allocated in one of the following categories and is aimed to support you to achieve identified goals. If a support has been allocated as a 'stated support' the funding allocation can only be used for this purpose.

The Capacity Building support categories provided by ALARA are:

- Improved Daily Living Skills
- Increased Social and Community Participation
- Improved Health and Well Being

As part of a separate arm of the organisation ALARA also supplies:

- Support Coordination
- Improved Life Choices (Plan Management)

The following section outlines ALARA's prices that apply to Capacity Building Supports.



## Coordination of Supports

ALARA is registered with the NDIA to provide Coordination of Supports.

As your Support Coordinator we can:

- help you to understand and implement your NDIS Plan
- work with you to short list and investigate suitable providers
- work with you to choose preferred providers and create an agreement with them and understand what to expect from them
- provide coaching and mentoring to develop your capacity and the resilience of your networks
- assistance to prevent, mitigate and resolve points of crisis
- assist you to build Capacity and Resilience
- help you to move to a different provider if required
- report to the NDIA

The aim is to ensure that you have maximum choice and information about potential providers.

ALARA's Support Coordination Services are operationally separate from our direct service and we have a Conflict of Interest Policy in operation to ensure you are offered the widest range of local options available.

ALARA holds an extensive register of local providers and services from many years of work with Your Life Your Choice clients, the Emergency Funding Initiative and the Older Carer Initiative Program as well as our strong networks in the local communities in which we work.

NDIS Support Item Description	Price
Level 2 - Coordination of supports Strengthening a participant's ability to coordinate their supports & participate in the community.	\$100.14 / hour
Training in capacity building and plan administration Training in planning and plan management for participants.	\$65.09 / hour
Assistance with accommodation and tenancy obligations	\$65.09 / hour

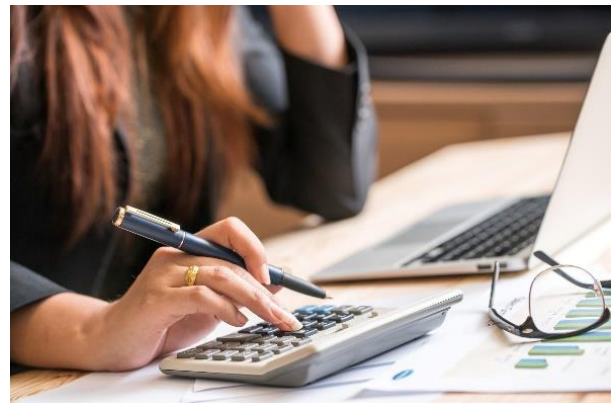
NDIS Support Item Ref No.
OFFICE USE ONLY
07_002_0106_8_3
07_003_0117_8_3
08_005_0106_2_3



ALARA provides **financial plan and financial capacity building and administration services**.

These services include:

- managing provider bookings and claims in the NDIS Portal
- managing payment of invoices
- managing financial disputes or queries
- provide access to a wider range of service providers including non-registered providers (subject to the limitation and the NDIS Price Guide)
- expense claim processing
- providing you with monthly statements
- maintaining financial records
- building your financial skills and enhancing your capacity to develop our supports



NDIS Support Item Description	Price
<b>Plan and financial capacity building</b> Setting up and undertaking regular liaison with providers and monitoring support provision and enhancing the participant's ability to manage supports.	\$65.09 / hour
<b>Financial administration &amp; Plan Management – set up costs</b> A one-off setting up of the financial management arrangements for managing of funding of supports.	\$232.35 each
<b>Financial administration – monthly processing</b> A monthly fee for the ongoing maintenance of the financial management arrangements for managing of funding of supports.	\$104.45 / month

NDIS Support Item Ref No.
OFFICE USE ONLY
14_031_0127_8_3
14_033_0127_8_3
14_034_0127_8_3

## Increased Social and Community Participation

ALARA provides a range of individual or group based programs to support and assist participants to increase their independence and develop skills for community, social and recreational participation. You may wish to learn to travel independently on public transport where this is available in your community.

NDIS Support Item Description	Price	NDIS Support Item Ref No. <small>OFFICE USE ONLY</small>
Life transition planning including mentoring, peer support and individual skill development – weekdays and evenings to 8pm (excluding public holidays)	\$65.09 / hour	09_006_0106_6_3
<b>Individual skills development and training*</b> Individual life skills development and training including public transport training and support, developing skills for community, social and recreational participation – weekdays and evenings to 8pm (excluding public holidays).  * This can also be delivered in groups with the amount listed divided between the groups.  2:1 \$32.54 / hour 3:1 \$21.69 / hour (with any transport being charged separately)	\$65.09 / hour	09_009_0117_6_3
Innovative Community Participation	By quote	09_008_0116_6_3
<b>Community Participation Activities</b> Customised services designed to build skills and independence	By quote	09_011_0125_6_3



## Improved Health and Wellbeing

Physical activity, along with good nutrition has benefits for people of all ages and ability. Being active and fit provides long term health benefits, helps to create a positive mindset and opens up the possibility of participating in new activities and making new friends. ALARA's qualified personal trainers are available on a group or individual basis to help you to achieve your fitness goals.

ALARA also runs a range of group activities with a health and wellness focus. These include healthy meal preparation classes using produce from our accessible community gardens, walking groups, sporting groups and monthly Megasports program

NDIS Support Item Description	Price
<b>Personal training</b>  Personal training provided to a participant required due to the impact of their disability – conducted during weekdays.	\$58.10 / hour

### NDIS Support Item Ref No.

OFFICE USE ONLY

12\_029\_0126\_3\_3





## Improved Daily Living Skills

ALARA provides a range of training programs to support you, either individually or in a small group to improve your skills in a range of areas. Capacity Building supports for improved daily living skills are provided Monday – Friday (up until 8pm) dependant on your availability.

Support Item	Price
Individual skills development & training, includes public transport training & support  Individual training provided in the home for general life skills to increase independence – weekdays only (excluding public holidays)	\$57.10/ hour
Training for carers / parents  Training for carers in matters related to caring for a person with disability.	\$65.09 / hour

Support Item Ref No.
OFFICE USE ONLY
15_037_0117_1_3
15_038_0117_1_3



## Capacity Building – Activity Related Transport

Support Item	Price
Activity based transport associated with life transition planning including mentoring peer support and individual skill development provided in a support worker car or service vehicle.	\$0.82 / kilometre*
Activity based transport associated with life transition planning including mentoring peer support and individual skill development provided in a commuter bus.	\$1.32 / kilometre*
Activity based transport associated with skill development in a group provided in a support worker car or service vehicle	\$0.82 / kilometre*
Activity based transport associated with skill development in a group provided in a commuter bus	\$1.32 / kilometre*

### Support Item Ref No.

OFFICE USE ONLY

09_590_0106_6_3
09_590_0106_6_3
09_591_0117_6_3
09_591_0117_6_3

\* Where more than one participant is supported to travel the per kilometre rate is divided between the participants.

# OTHER IMPORTANT INFORMATION

### *Support Worker Travel Time*

A support worker's travel time from home to work (or first participant) and from work to home will not be charged.

If your services are provided in a run and the worker travels between participants or from a centre to your location, as per the price guide, ALARA may claim a maximum of 30 minutes travel from the previous participant in the Ipswich area and up to 60 minutes from the previous participant in areas of Lockyer and Somerset (where classified as MMM4 and MMM5). This will only apply if travel costs are incurred by the organisation.

Where a worker is travelling to provide services to more than one participant in a region, then the provider with the agreement of participants in advance can apportion travel time (including the return journey where applicable). This is claimed separately from the primary support using the same line item / price as the support and the 'travel time' in the MySpace Portal.

If 4 or more hours is delivered to one client, no worker travel time is deducted from that client.

### *Explaining GST*

Most items in the NDIA Price Guide are GST exempt as described in s38 – 38 of the GST Act. For the small number of items where GST is applicable, (eg. delivery fees and taxi fares) the price is inclusive of GST.

### *Exit Fees*

ALARA does not charge exit fees to NDIS participants.

### *Cancellations and 'No Shows'*

For more information about ALARA's Policy on Cancellations and 'No Shows' please refer to the *Policy – NDIS Service Cancellations*.

### *Non Face to Face Supports*

Certain types of non-face to face supports are billable and will be negotiated in the Service Agreement. These include report writing (for the NDIS, other agencies or other workers) and communication notes completed at the end of support. This will be charged on the base rate for the type of support as the work is completed. This does not apply to group based supports.